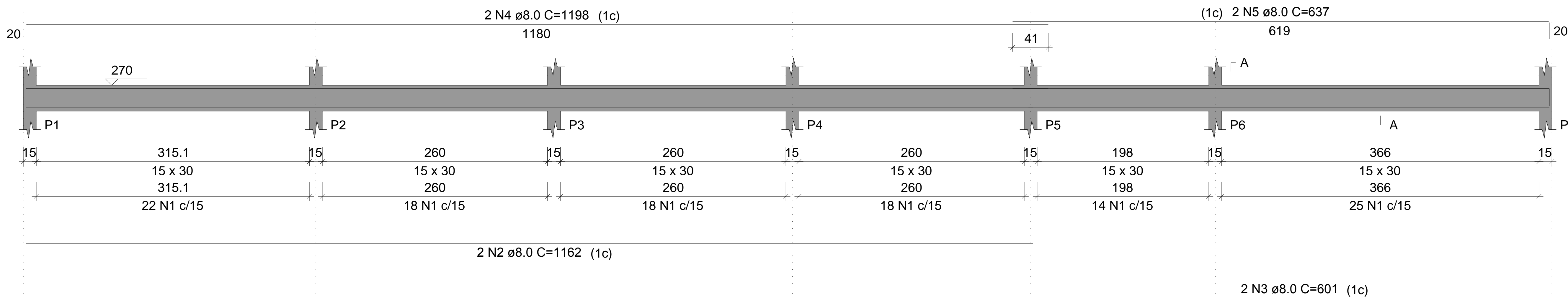


V201

ESC 1:50



SEÇÃO A-A

ESC 1:25

RELAÇÃO DO AÇO

AÇO	N	DIAM (mm)	QUANT	C.UNIT (cm)	C.TOTAL (cm)
V201	1	5.0	328	77	25256
V204	2	8.0	4	1162	4648
V207	3	8.0	4	601	2404
	4	8.0	4	1198	4792
	5	8.0	4	637	2548
	6	8.0	14	238	3332
	7	8.0	14	258	3612

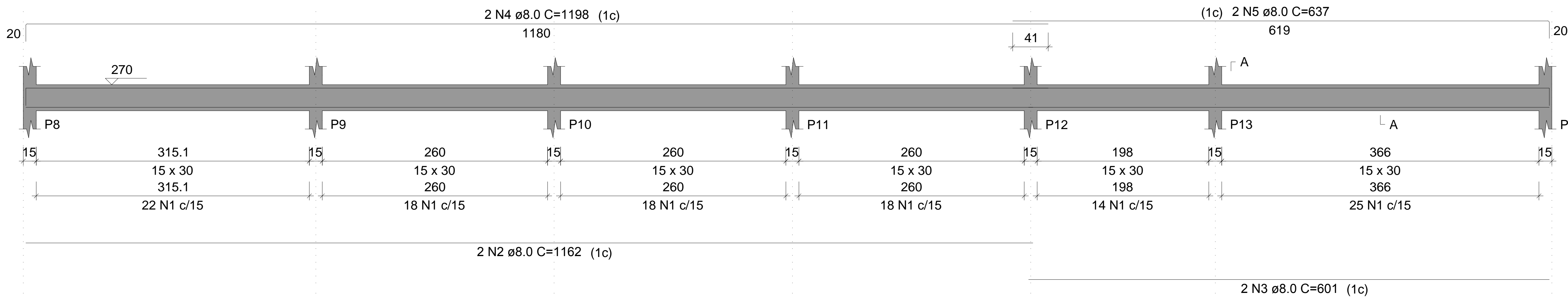
RESUMO DO AÇO

AÇO	DIAM (mm)	C.TOTAL (m)	PESO + 10% (kg)
CA50	8.0	213.4	92.6
CA60	5.0	252.6	42.8
PESO TOTAL (kg)			
CA50	92.6		
CA60	42.8		

Volume de concreto (C-25) = 2.31 m³
Área de forma = 38.43 m²

V202

ESC 1:50

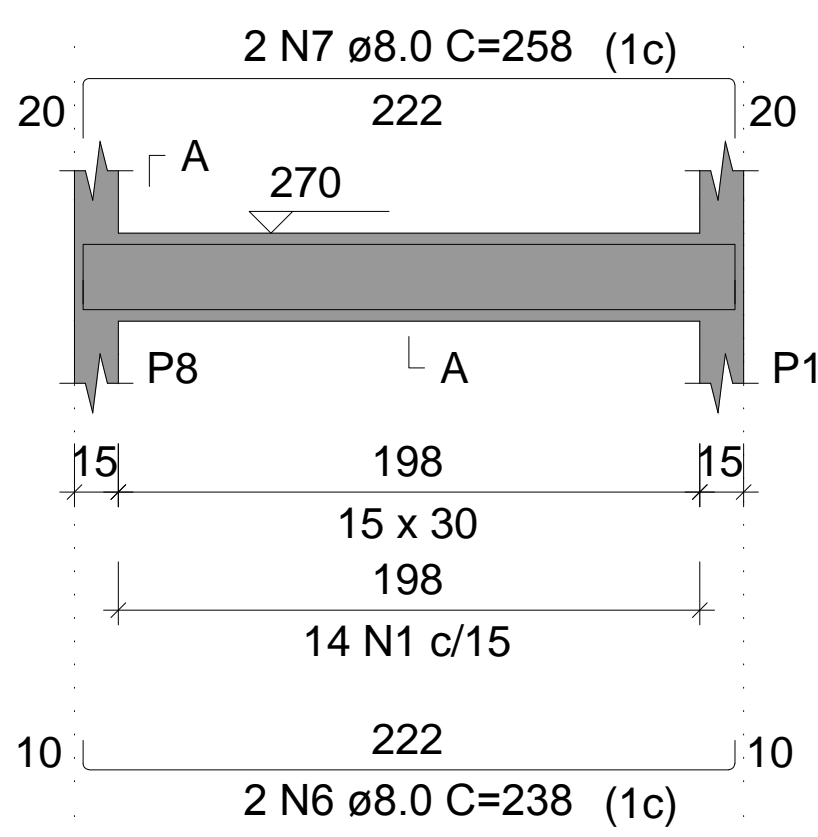


SEÇÃO A-A

ESC 1:25

V203

ESC 1:50

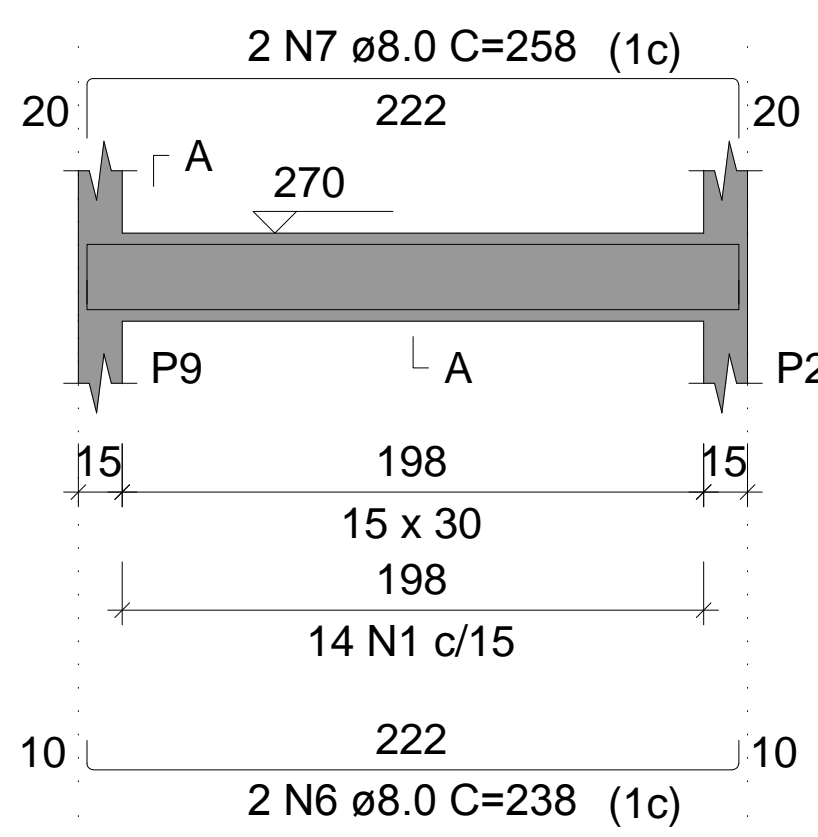


SEÇÃO A-A

ESC 1:25

V204

ESC 1:50

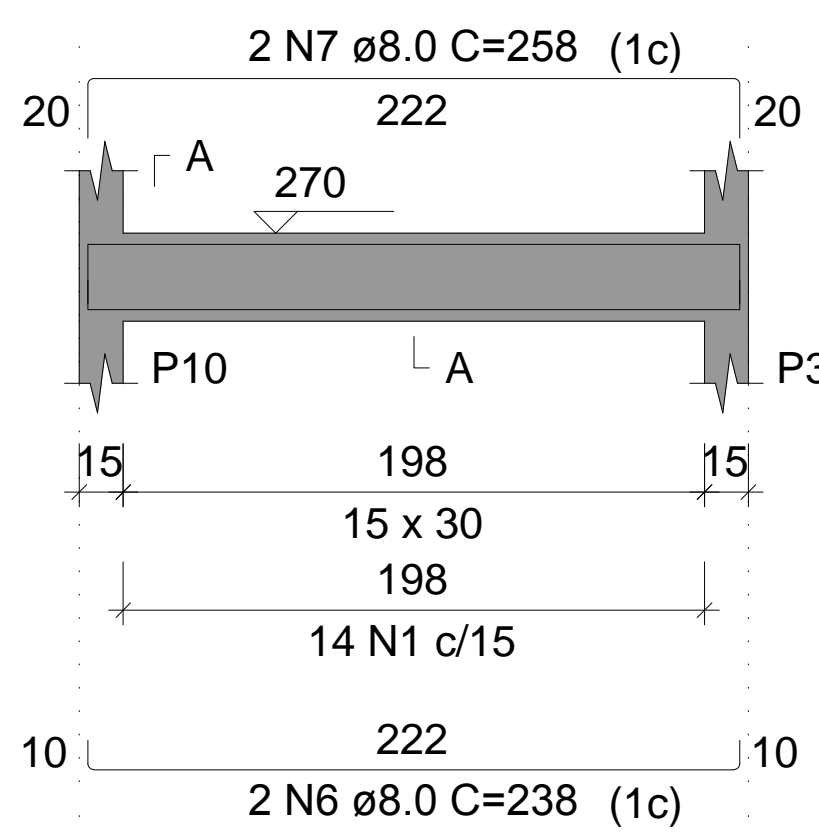


SEÇÃO A-A

ESC 1:25

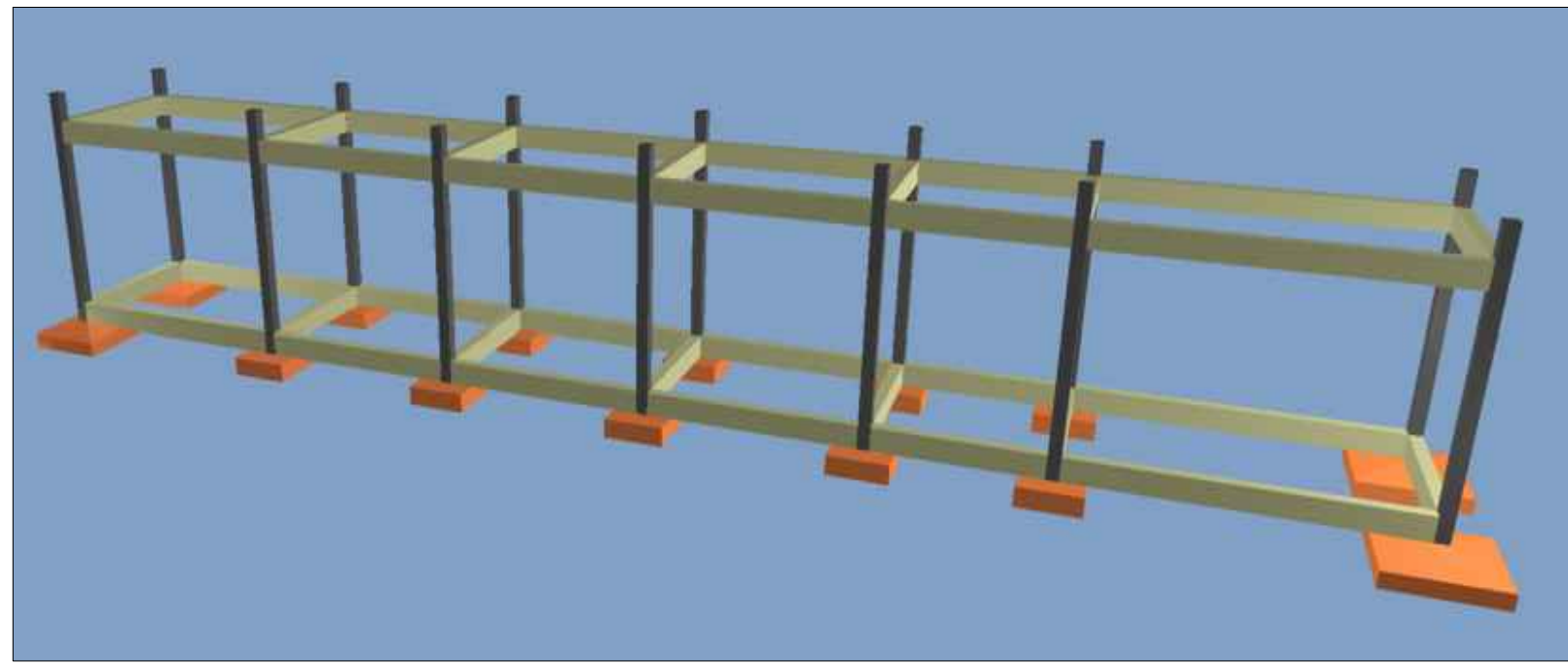
V205

ESC 1:50



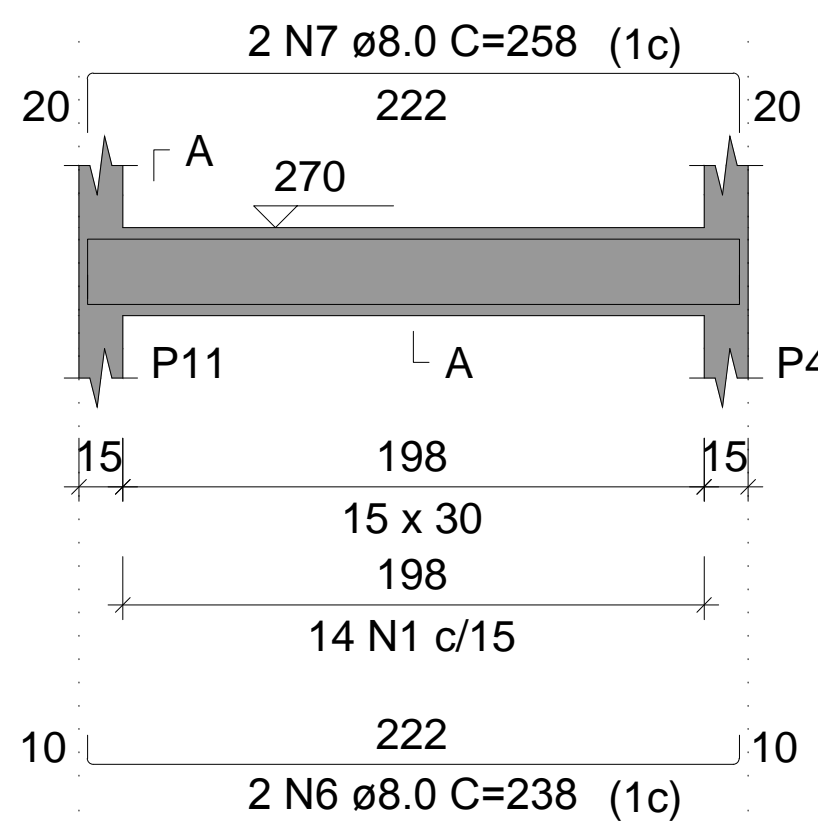
SEÇÃO A-A

ESC 1:25



V206

ESC 1:50

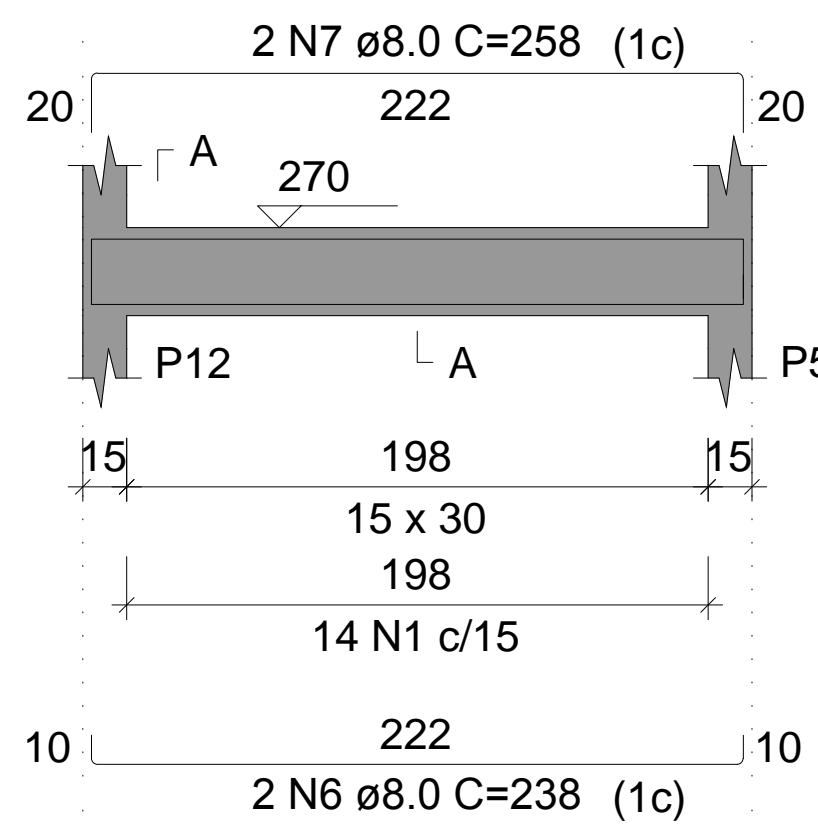


SEÇÃO A-A

ESC 1:25

V207

ESC 1:50

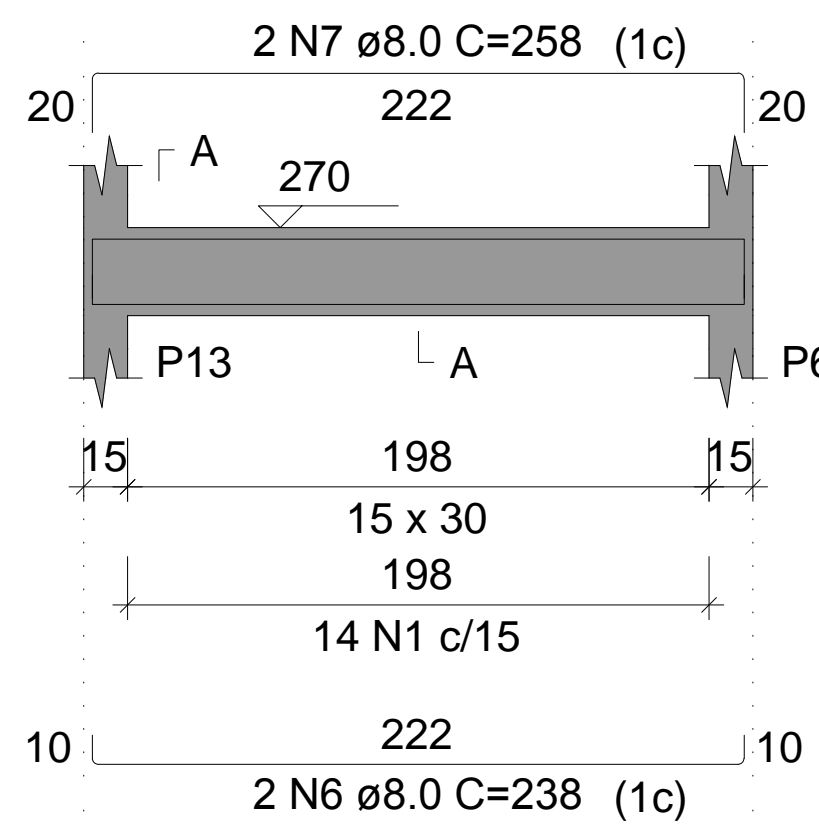


SEÇÃO A-A

ESC 1:25

V208

ESC 1:50

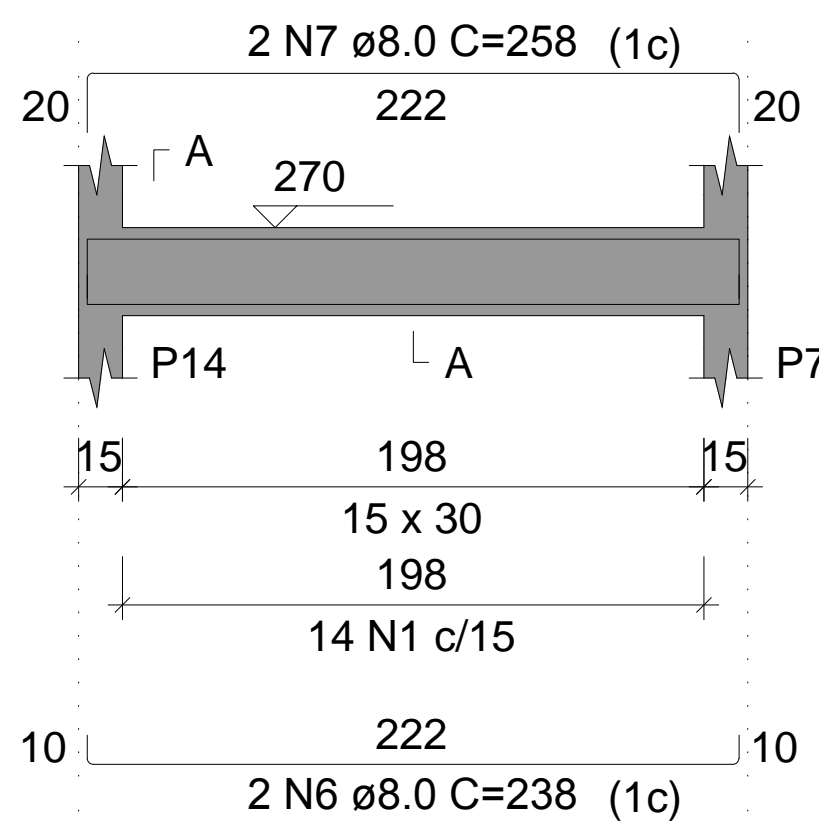


SEÇÃO A-A

ESC 1:25

V209

ESC 1:50



SEÇÃO A-A

ESC 1:25